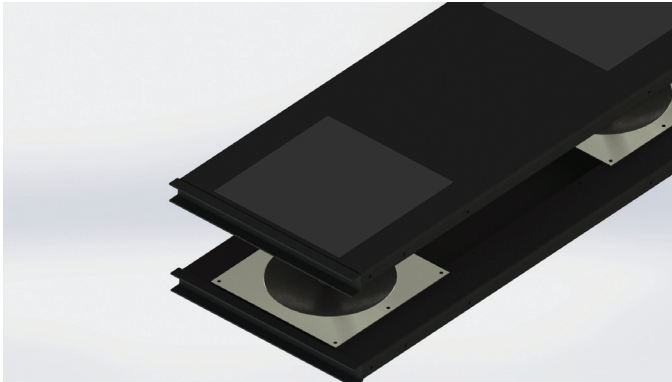
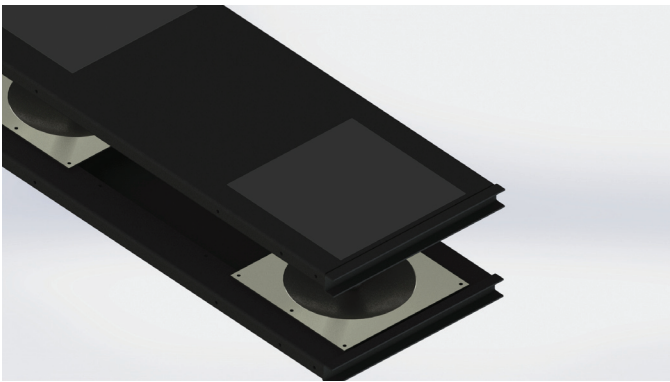


EXTRA-WIDE PLANKS

To accommodate equipment with unique footprints, two additional width planks are available, 14.75" and 15.75". These wider width planks can be used in a mixed row of other width planks via the same "C" channel connectivity where more area is required to properly place the cabinets on a shared plank.



A 14.75" Width Plank, separated to show bearing surface (with bonded liner)



A 15.75" Width Plank, separated to show bearing surface (with bonded liner)

FEATURES & SPECIFICATIONS

- Extra Wide Plank features 8" Ball-N-Cone™ Isolator
- Available in (3) bearing surfaces
- Available in Heavy-Duty (in Sizes over 42" Deep)

Width: 14.75" or 15.75"

Depth: 30" to 60"

Color: Black