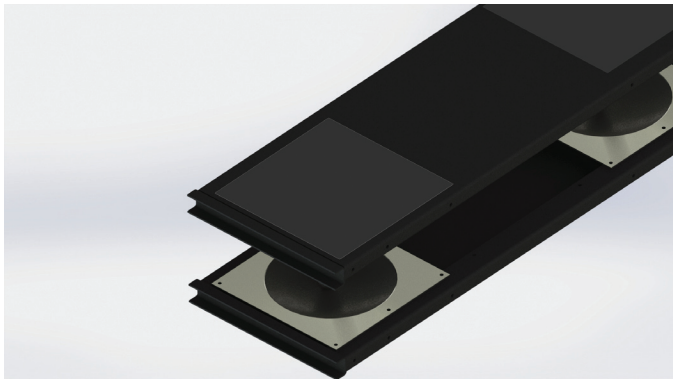


Close up of the bottom of a 10.75" Width Plank



A 12.75" Width Plank, separated to show bearing surface (with bonded liner)

ISO-Base™ platforms are in use throughout the world protecting valuable IT Equipment. Its unique modular and patented plank design, allows the build-out of sleek low-profile rows for isolating all types server racks and IT equipment, in varying sizes and weights.

The open "C" channel in the front and back of the plank design allows the user to move or change out equipment easily, and as needed. ISO-Base™ platforms can be installed in a "live" computer room since there is no drilling or anchoring required. The platform rows can be built-out with equipment rolled into position using ramps, or the racks can be hydraulically lifted straight up (about 5 inches), to allow the build-out of the platform, then lowered onto the platform.

The original platforms feature a plank design with (2) bearing sets and in two standard widths. The 10.75" wide planks are traditionally used at the end of rows for a more concise fit. The 12.75" wide planks are used when two cabinets share a plank in the middle of the built-out row.

FEATURES & SPECIFICATIONS

- (2) Standard Widths, (11) Standard Depths
- Sleek 3" Height
- No Anchoring Bolting or Drilling Required
- * Exceeds Zone 4 Requiriements
- JQA Certified for seismic requirements

Width: 10.75" or 12.75"

Depth: 30" to 60"

Color: Black